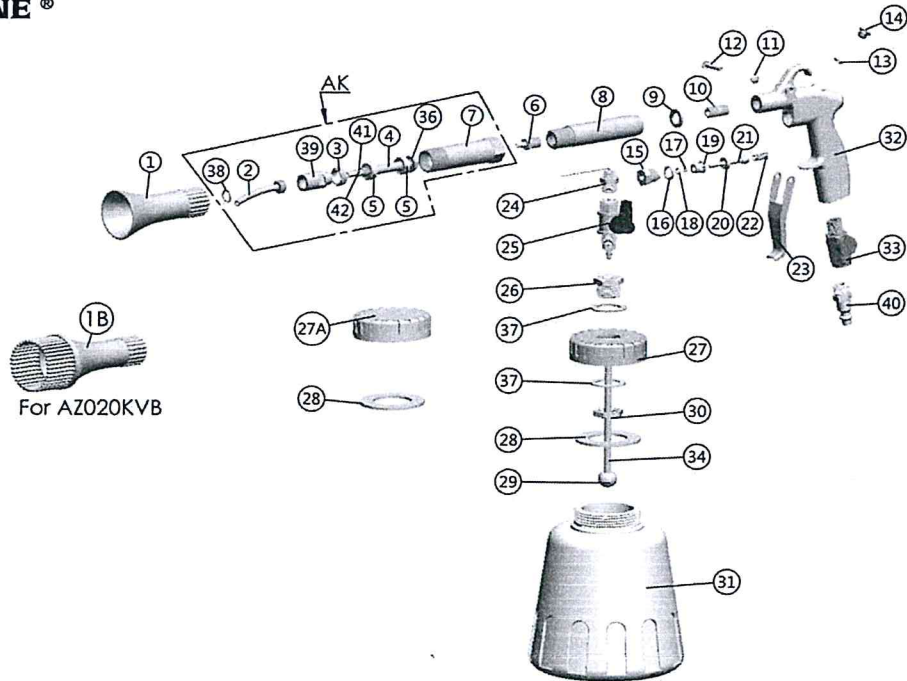




PROFESSIONAL TOOL



AZ020KV AZ020KVB(w/Brush) Cleaning Gun



| Ref. No. | Part No. | Description | Q'ty /Tool | Ref. No. | Part No. | Description | Q'ty /Tool |
|----------|---------------|---------------------------|------------|----------|---------------|--------------------------------|------------|
| 1 | SPAZ020K005 | Plastic Nozzle | 1 | 24 | SPZ020009A | Inner Tube Ass'y | 1 |
| 1B | SPAZ020K005B | Plastic Nozzle w/Brush | | 25 | SPZ010017 | Air Reverse Switch Ass'y | 1 |
| 2 | SPZ020007E | Aluminum Tube | 1 | 26 | SPZ010018 | Screw | 1 |
| 3 | SPAZ020K006A | Nut For Bearing | 1 | 27 | SPZ010019 | Cap (W/Hole) | 1 |
| 4 | SPAZ020K002A | Driver Shaft | 1 | 27A | SPZ010019A | Cap (W/O Hole) (Option) | 1 |
| 5 | SPAZ2000A007A | Bearing 688ZZ (stainless) | 2 | 28 | SPZ020014 | Gasket | 2 |
| 6 | SPAZ020K004C | Screw (Plastic) | 1 | 29 | SPZ010032 | Bushing | 1 |
| 7 | SPAZ020K001A | Bearing Housing | 1 | 30 | SPZ010021 | Nut | 1 |
| 8 | SPZ020001 | Hose | 1 | 31 | SPZ010023A | Cup(NEW) | 1 |
| 9 | SPZ010030 | Gasket | 1 | 32 | SPZ010001D | Housing (without logo) | 1 |
| 10 | SPZ010025 | Screw | 1 | 33 | Z-033BA | Air Inlet (1/4"PF) | 1 |
| 11 | SPZ010008A | Screw | 1 | | Z-033BA-PT | Air Inlet (1/4"PT) | |
| 12 | SPZ010007A | Pin | 1 | | Z-033BA-NPT | Air Inlet (1/4"NPT) | |
| 13 | SPZ010026 | O-Ring 4.47x1.78 | 1 | 34 | SPZ010022 | Tube Ass'y(incl.part.no.29) | 1 |
| 14 | SPZ010010 | Screw | 1 | 36 | SPAZ020K008 | Dust Plate (id8.0 od15.5 t1.5) | 1 |
| 15 | SPZ010011 | Screw | 1 | 37 | SPZ010033 | Washer (id 20 od 30 t1.5) | 2 |
| 16 | SPZ010028 | O-Ring 9*2 | 1 | 38 | SPZ020010 | R-Ring (RTW-11) | 1 |
| 17 | SPZ010031 | O-Ring 2x1 | 1 | 39 | SPAZ020K009 | Adapter | 1 |
| 18 | SPZ010027 | O-Ring 3.5x1.5 | 1 | 40 | CP-L14M | Nipple (EURO Type) | 1 |
| 19 | SPZ010012 | Bushing | 1 | | CP-M14M | Nipple (USA Type) | |
| 20 | SPZ010013 | Gasket | 1 | | CP-N14M | Nipple (ASIA Type) | |
| 21 | SPZ010014 | Valve Stem | 1 | 41 | SPAZ020K010 | Teflon Tube ID: 4*OD:5 | 1 |
| 22 | SPZ010015A | Spring | 1 | 42 | SPAZ2000A005A | Plug ϕ 7.0* ϕ 5.0 | 1 |
| 23 | SPZ010009 | Trigger | 1 | AK | SPAZ020KVAK2 | Rotate Set | 1SET |
| | SPZ010009S | Trigger (Stainless) | | | | | |